



**IMACGP**  
**ONLINE**

# PROSPECTUS

2014-15

 **SmarTeach**<sup>TM</sup>

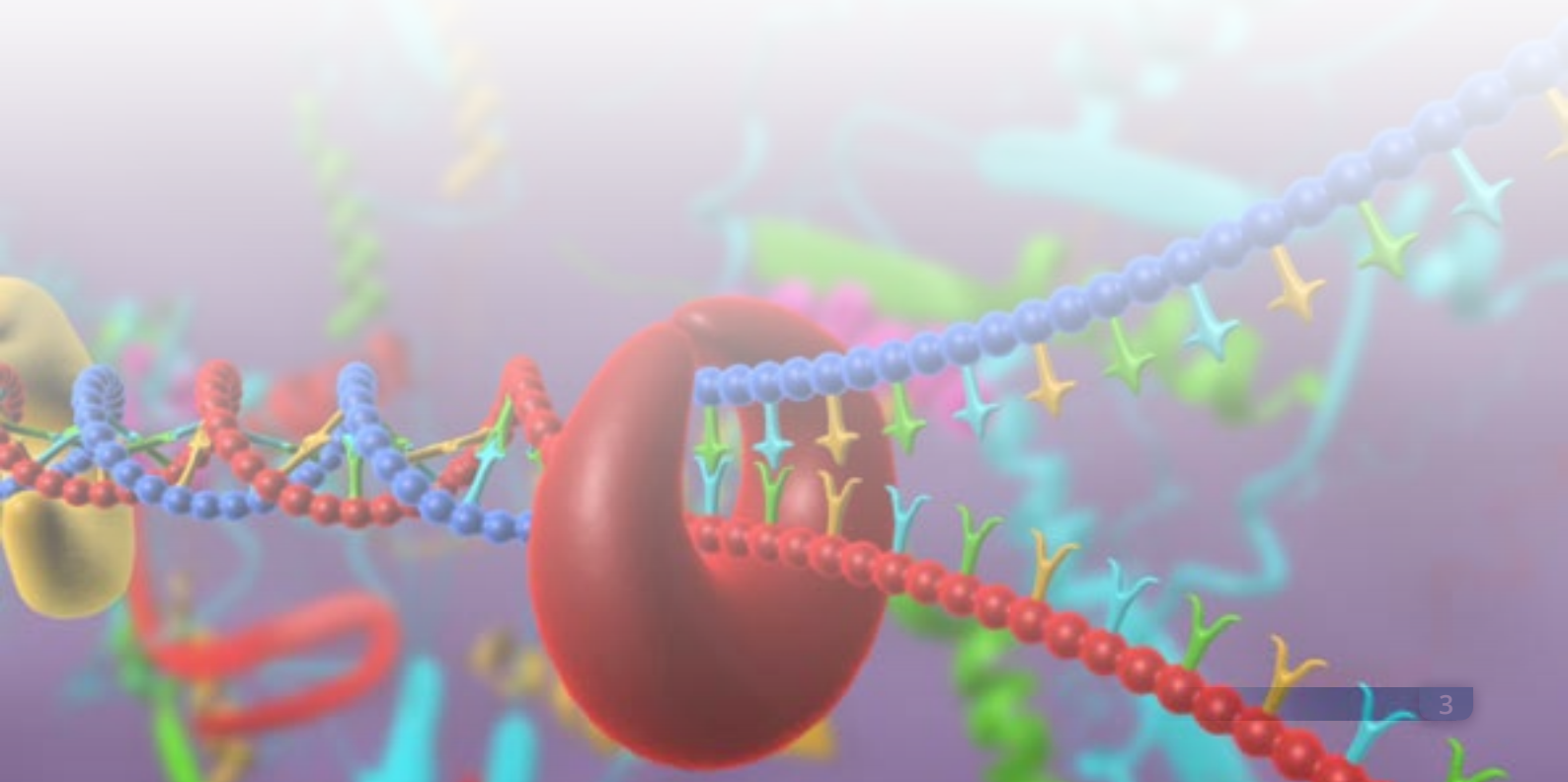


**IMACGP**  
ONLINE

## Table of Contents

About IMACGP Online Courses	1
About Martin Luther Christian University	2
<b>About MEdRC Edutech Ltd</b>	3
MEdRC's Product Offerings	3
Programs Details For Admissions 2014-15	4
<b>Diploma in Family Medicine (2 years Program)</b>	
<b>Fellowship in Family Medicine (1 year program)</b>	5
Introduction	5
Objectives of the Program	6
Program Curriculum	6
Program Duration	6
<b>Fellowship in Diabetes Mellitus</b>	7
Introduction	7
Objectives of the Program	7
Program Curriculum	8
Program Duration	8
<b>Certificate in Primary Care Radiology</b>	9
Introduction	9
Objectives of the Program	9
Program Curriculum	9
<b>Certificate in Genetic Counselling</b>	10
Introduction	10
Objectives of the Program	11
Program Curriculum	11
Examination Pattern	11

<b>Admission Procedure</b>	12
Eligibility	13
Method of Payment	13
Refund Policy	13
Default in paying installments	13
Enrolling in a Course	13
Enrollment Process	14
Program Accreditation	14
Program Delivery	14
MEdRC's SmarTeach Online Learning Platform	14
MEdRC's SmarTeach for Tabs	15
Clinical Rotations	15
Clinical Log Book	15
<b>Examination Methodology</b>	16
Pattern & General rules of Assessments and Examinations	16
Course-wise Exam pattern and weightage of marks	17
Diploma Course	17
Fellowship Course	18
Certificate Course	18
Criteria for Award of Diploma/Fellowship	18
<b>DISCLAIMER</b>	20





## About IMACGP

Indian Medical Association College of General Practice (IMACGP) was started in the year 1963 by Dr. P.G. Batla, with an intention to provide Continuous Medical Education (CME) to the General Practitioners. Over the last few years, IMACGP has conducted training programs in General Practice, Diabetes Mellitus, Ultrasonography, Practical Cardiology, Community health, Critical Care and Family Medicine. International programs conducted by IMACGP includes Post Graduate Diploma in Emergency Medicine, MRCGP International and an International Post Graduate Pediatric Course. More than 2500 doctors have graduated and hence upgraded their skills through these certificate programs. Additionally, thousands have benefited from the CME activities conducted regularly by the IMACGP.

The IMACGP Online is a virtual university that offers online education to medical graduates through an interactive medium of education taking a leaf from the best practices of distance education from across the Globe. The IMACGP Online is a joint educational outreach venture, promoted by the Indian Medical Association College of General Practitioners (IMACGP), and MEdRC Edutech Ltd that strives to bring the classroom to your home and clinic.

With changing times, the IMACGP has transformed itself to adopt contemporary modern methods of teaching and learning, leveraging Information and Communication Technologies. The CGP Online brings along the combined experiences and expertise of IMACGP in the 'brick and mortar education' and MEdRC EduTech Ltd in the 'click and mortar education' in the company of distinguished faculty from across the country who have delivered the course predominantly online through the SmarTeach e-Learning platform.

All CGP Online courses get affiliation from a premier university from the North-east of India, viz. the Martin Luther Christian University [MLCU] in Shillong, Meghalaya. It is a UGC approved university serving the cause of education in one of the most difficult terrains in the country, difficult not only in terms of commuting but also in terms of development, while never wavering from the stringency required for the best practices in higher education.

### **IMACGP Online**

MA TN State Hqrs Building, Doctors Colony, Via Bharathi Nagar first Main Road,  
Off. Mudichur Road, Tambaram, Chennai – 600 045

<sup>1</sup>'Click and Mortar sessions' is a new nomenclature derived from the emerging technologies in ICT, viz. getting information at the click of the mouse. It is as opposed to Brick and mortar, which is the typical classroom method of distance education that was prevalent across the globe and is still prevalent in many countries even today.





Martin Luther Christian University

## About Martin Luther Christian University (MLCU)

**Martin Luther Christian University** Shillong, Meghalaya is a UGC recognised private university. Martin Luther Christian University commits itself to equip the community and its students with a high quality education that will empower them to graduate as versatile professionals, to serve with purpose, integrity and efficiency everywhere in the world. As global citizens these students will be the leaders' of tomorrow. As global citizens these students will provide the leadership for tomorrow.

The university is named after Martin Luther (1483-1546), the father of reformation, the first Christian leader to promote higher education for the general populace.

Martin Luther Christian University was established by ACT No. 11 of 2005 of the Legislative Assembly of Meghalaya and received the assent of the Governor on July 6, 2005. The Government of Meghalaya issued the gazette notification on February 22, 2006. The inception of the university is in accordance with the University Grants Commission Act, 1956 under Section 2(f) and the university is empowered to grant degrees under Section 22 of the UGC Act.

Martin Luther Christian University conduct courses in Management and Commerce Studies, Information Sciences, Social Work, Counseling Psychology, Allied Health Sciences, Tourism Management, Peace Studies, Environment and Traditional Ecosystems, Music and Fine Arts. MLCU has its campuses in Shillong, Tura, Nongtalang and Jowai.

MLCU has positioned itself as a Development University and places emphasis on job and career-oriented courses. Placement is close to hundred percent and the graduates work all over the Northeast and in other parts of India.

### Contact Details :

#### **Martin Luther Christian University**

Dongkatieh, Block - 1, Nongrah, Shillong 793006, Meghalaya

Ph: 8974068427 | Fax: 0364-25064890 | Website: <http://www.mlcuniv.in/>

**MEDRC**

The Heart of Learning



## About MEDRC EduTech Ltd

**Medical Education Research Centre** for Education Technologies (MEDRC) at Hyderabad has been doing pioneering work in the area of Healthcare e-Learning by developing the curricular content for medical & dental education in the form of multimedia enhanced E-Content and E-Lectures that can complement the teaching efforts at various medical colleges.

MEDRC has developed SmarTeach® UGMed, a digital version of the MBBS theory classes, which is based on the prescribed MCI syllabus for Medical students. While teachers can project the E-Content in class, making their teaching more effective, students can also use the same via an E-Library facility to see and hear virtual lectures delivered by medical teachers selected from all over the country.

MEDRC has over 15 years of experience in Multimedia development for Medical and Healthcare Education. MEDRC has collaborated with 375 medical teachers of excellence, and institutions like NIMS, IMA, API, AIG, Care etc., to create superior digital content for healthcare education.

### MEDRC's Product Offerings

Product	Product Description
<b>SmarTeach® UG/PG Med (MBBS + MD) and Dentistry (BDS)</b>	MEDRC's flagship product consisting of over 7,500 multimedia enhanced lectures that capture the MBBS and BDS curriculum in digital format, as prescribed by the Medical Council of India (MCI) and Dental Council of India (DCI). It is a digital version of the MBBS and BDS classroom where students can view and hear virtual lectures delivered by renowned teachers.
<b>SmartMD</b>	This product provides students the access to over 1,500 high yield topics from 17 subject areas. More than 250 e-lectures provide textbook wise coverage of exam-relevant topics interspersed with a rich bank of subject-wise practice questions.
<b>SmarTeach® FMGE e-Tutor</b>	E-Tutor provides foreign medical graduates (FMG) (viz., students completing MBBS from countries such as China, Russia, etc.) who wish to practice in India to prepare for MCI's FMG Screening Test, via online learning mode.
<b>SmarTeach® FMGE e-Tests</b>	E-Tests are a set of online mock exams based on a powerful e-learning engine populated with over one hundred thousand multiple-choice questions (MCQs). E-Tests mark and analyze student responses against the responses entered by thousands of students who may have, logged in previously. The product allows students to simultaneously cover the syllabus for the All India or state PG entrances.

Contact Details :

**MEDRC EduTech Ltd**3rd Floor, TSR Towers, 6-3-1090, Rajbhavan Road, Somajiguda,  
Hyderabad, AP, India. PIN 500082

T: +91.40.23316253, 23316263 | E: info@medrcedutech.com

Website: <http://www.medrcedutech.com> | <http://www.smarteach.com>



## Programs Details for Admissions 2014-15

This prospectus can be downloaded at no cost from our website [www.imacgponline.com](http://www.imacgponline.com). All the required details are provided to enable candidates to choose and make an informed decision for enrolling, from a list of programs being offered for the academic year, 2014-15. Please read the Prospectus carefully before enrolling into any program.

### Programs List

List of programs offered by IMACGP for the year 2014-2015

Present Courses			
No.	Course	Duration	Degree Awarded
1	Diploma in Family Medicine	2 years	DFM
2	Fellowship in Family Medicine	1 year	FFM
3	Fellowship in Diabetes Mellitus	1 year	FDM
4	Certificate in Primary Care Radiology	6 months	CPCR
5	Certificate in Genetic Counselling	6 months	CGC
Upcoming Courses			
6	Fellowship in Primary Care Pediatrics	1 year	FPCP
7	Fellowship in Ultrasonography	1 year	FUSG
8	Fellowship in Primary Care Cardiology	1 year	FPCC
9	Fellowship in Geriatric Medicine	1 year	FGM
10	Fellowship in Hospital Management	1 year	FHM

### Program Eligibility

- The courses are open to MBBS Doctors who are registered with the Medical Council of India (the State chapters of Medical Council of India) and are Life members of Indian Medical Association)
- For those candidates who are not Life time members of the IMA, the Membership Form is can be found along with the Admission Form
- A student who has been provisionally registered with Medical Council is also eligible to enroll for any of the courses, subject to his/her completion of the Compulsory Rotation of Internship [CRI]. He/She should submit a Photostat copy of the Provisional Registration Certificate. A copy of the permanent certificate should be submitted as soon as the applicant gets the Permanent Registration Number.



## Diploma in Family Medicine, Fellowship in Family Medicine

### Introduction

According to American College of Family Physicians, “Family medicine is the medical specialty which provides continuing, comprehensive health care for the individual and family. It is a specialty in breadth that integrates the biological, clinical and behavioural sciences. The scope of family medicine encompasses all ages, sexes, each organ system and every disease entity”.

**World Health Organization (WHO)** defined Family medicine as that specialty of medicine which is concerned with providing comprehensive care to individuals and families and integrating biomedical, behavioural and social sciences. As an academic discipline, it includes comprehensive health care services, education and research.

The specialty of family medicine was created in 1969 to fulfill the generalist function in medicine, which suffered with the growth of sub specialization and fragmentation of personalised health care after World War II.

In the increasingly fragmented world of health care, Family physicians are dedicated to provide comprehensive health care for people of all ages — from newborns to seniors and treating the person as whole. Unlike other specialties that are limited to a particular organ or disease, family medicine integrates care for patients of both genders and all ages, and advocates for the patient in a complex health care system. Family medicine’s cornerstone is an ongoing process of patient-physician relationship with the patient viewed in the context of the family and their social surrounding.

A family doctor is a physician who is a specialist trained to provide health care services for all individuals, regardless of age, sex or type of health problem. A family doctor provides primary and continuing care for entire families within their communities; addresses physical, psychological and social problems; and coordinates comprehensive health care services with other specialists as needed. Family doctors may also be known as family physicians or general practitioners, depending on the location of practice.

Dr Margaret Chan, Director-General of the World Health Organization has this to say about Family Medicine and Physicians: A health system, where primary care is the backbone and family doctors are the bedrock, delivers the best health outcomes, at the lowest cost, and with the greatest user satisfaction. She goes on to add: Primary care is our best hope for the future. Family doctors are our ‘Rising stars for the future’.

Propelled by such emphatic endorsement of concepts of Family Medicine by the American College of Family Physicians and the World Health Organization, IMACGP is launching its flagship online course, the two-year Diploma in Family Medicine, with the combined experiences of IMACGP running the course in ‘chalk and board’ distance education for nearly a decade or so and MEdRC nearly for two decades into the field of virtual education.

On completion of the course, graduate doctors would become competent patient-centred clinicians - the Family Physicians, who flourish by building relationship with the patients and family, as envisioned by WHO, rather than treat them as numbers.



## Objectives of the Program

- To develop knowledge needed to diagnose and manage common acute and chronic conditions across all age groups seen in outpatient family medicine settings.
- To develop Clinical and Communication Skills to take accurate histories, perform focused physical exams, develop evidence based differentials, generate cost effective management plans, and communicate those plans effectively with patients in outpatient family medicine settings.
- To develop Skills to integrate preventive care into outpatient practice
- To develop the necessary interpersonal skills required in communicating with patients from varied of backgrounds, as well as the ability to impart appropriate health education wherever necessary.

## Program Curriculum

Semester 1	Semester 2	Semester 3	Semester 4
<b>Family Practice</b> <ul style="list-style-type: none"> <li>- Family practice management</li> <li>- Medical record keeping</li> <li>- Patient education and counseling</li> <li>- Environmental and Occupational health</li> <li>- Ethics and Medico legal issues</li> <li>- Pediatrics</li> <li>- Care of new born</li> <li>- Growth and development</li> <li>- Adoption</li> </ul>	<b>Pediatrics</b> <ul style="list-style-type: none"> <li>- Failure to thrive</li> <li>- PEM</li> <li>- Mental retardation and Speech disorders</li> </ul>	<b>Pediatrics</b> <ul style="list-style-type: none"> <li>- Acute Diarrhoea</li> <li>- Child with abdominal pain</li> <li>- Hepatomegaly</li> <li>- Child with a Heart murmur</li> </ul>	<b>Pediatrics</b> <ul style="list-style-type: none"> <li>- Anemia in child</li> <li>- UTI in children</li> <li>- Child with wheeze</li> </ul>
<b>Obstetrics and Gynecology</b> <ul style="list-style-type: none"> <li>- Pelvic Pain</li> <li>- Adnexal mass</li> <li>- PID</li> </ul>	<b>Obstetrics and Gynecology</b> <ul style="list-style-type: none"> <li>- Amenorrhea and Menorrhagia</li> <li>- Menopause and HRT</li> <li>- Normal Labour</li> <li>- Abnormal Labour</li> </ul>	<b>Obstetrics and Gynecology</b> <ul style="list-style-type: none"> <li>- Overview of Vaginitis</li> <li>- Screening for Malignancy in Female</li> <li>- Disorders of Micturition in Female</li> <li>- Cervical Cancer</li> </ul>	<b>Obstetrics and Gynecology</b> <ul style="list-style-type: none"> <li>- Infertility and management</li> <li>- Contraception</li> <li>- MTP</li> </ul>
<b>Medicine and Allied Subjects</b> <ul style="list-style-type: none"> <li>- Cardiology</li> <li>- Endocrinology</li> </ul>	<b>Medicine and Allied Subjects</b> <ul style="list-style-type: none"> <li>- Gastrointestinal System</li> <li>- Genitourinary System</li> <li>- Hematology</li> <li>- Joints/immune System</li> </ul>	<b>Medicine and Allied Subjects</b> <ul style="list-style-type: none"> <li>- Infections &amp; Infestations</li> <li>- Medical emergencies</li> <li>- Neurology</li> </ul>	<b>Medicine and Allied Subjects</b> <ul style="list-style-type: none"> <li>- Respiratory system</li> <li>- Psychiatry</li> <li>- Radiology</li> <li>- Dermatology</li> </ul>
<b>Surgery and Allied Subjects</b> <ul style="list-style-type: none"> <li>- General Surgery</li> </ul>	<b>Surgery and Allied Subjects</b> <ul style="list-style-type: none"> <li>- General surgery</li> <li>- Oto-rhino-laryngology</li> </ul>	<b>Surgery and Allied Subjects</b> <ul style="list-style-type: none"> <li>- General surgery</li> <li>- Ophthalmology</li> </ul>	<b>Surgery and Allied Subjects</b> <ul style="list-style-type: none"> <li>- General Surgery</li> <li>- Orthopedics</li> </ul>
<b>Program Duration</b>			
The duration for the Diploma Course is two years and for the Fellowship Course is one year.			



## Fellowship in Diabetes Mellitus

### Introduction

India leads the world with largest number of diabetic subjects earning the dubious distinction of being termed the “Diabetes capital of the world”. The latest global figures on diabetes released by the International Diabetes Federation (IDF) has raised a serious alarm for India by saying that nearly 52% of Indians aren't aware that they are suffering from high blood sugar. India is presently home to 65 million diabetics, second only to China which is home to 98.4 million diabetics. By 2030, India's diabetes numbers are expected to cross the 100 million mark.

Due to these sheer numbers, the economic burden of diabetes in India is amongst the highest in the world. The real burden of the disease is however due to its associated complications which leads to increased morbidity and mortality. WHO estimates that mortality from diabetes, heart disease and stroke costs about \$210 billion every year in India and is expected to increase to \$335 billion in the next ten years.

IMACGP has launched the Fellowship program in Diabetes Mellitus to equip the doctors with the latest, clinically relevant information in the field and it will give them a detailed insight into the disease, its complications and its management.

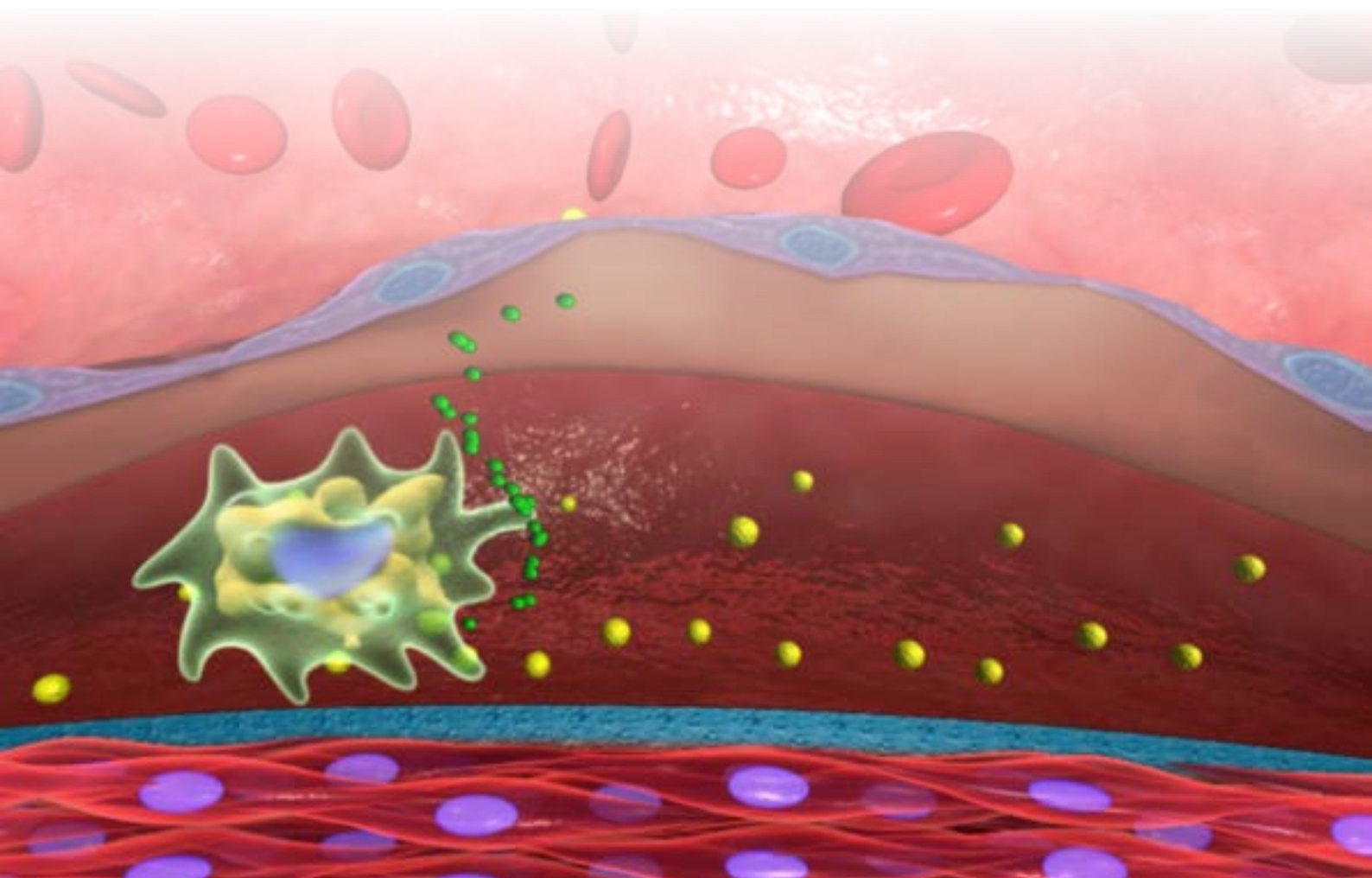
### Objectives of the Program

The One year Fellowship in Diabetes Mellitus aims at preparing you as a generalist doctor with comprehensive up-to-date knowledge in the management of Diabetes that allows you to confidently deal with routine problems of Diabetes in your clinical practice. During the course the candidates will be trained in different aspects of the inpatient and outpatient care for diabetes. They will also be exposed to the management of various diabetes complications; through postings in the diabetic, eye, heart, foot clinics and intensive care. At the end of the Course the candidate will be fully competent to deal with any type of diabetes patient as well as with diabetes complications of any degree of severity.

After completion of the Program the student will be able to do

- Screening and diagnosis of diabetes.
- Treatment of diabetes: Oral Hypoglycemic Agents and Insulin with latest developments.
- Complications of diabetes and its management

Program Curriculum	
Semester 1	Semester 2
<ul style="list-style-type: none"><li>- Applied Anatomy</li><li>- Physiology and Biochemistry of Endocrine Pancreas</li><li>- Carbohydrate Metabolism</li><li>- Epidemiology of Diabetes</li><li>- Pathophysiology of Diabetes</li><li>- Classification and Types of Diabetes</li><li>- Evaluating a Diabetic Patient</li><li>- Investigations and Monitoring</li><li>- Non Pharmacological Management</li></ul>	<ul style="list-style-type: none"><li>- Pharmacological Management</li><li>- Diabetes Management in Elderly</li><li>- Diabetes Management in ICU, CCU and in Surgeries</li><li>- Diabetes in Pregnancy</li><li>- Complications of Diabetes</li><li>- Emergencies in Diabetes</li></ul>
Program Duration	
The program duration for the Fellowship in Diabetes Mellitus is one year.	





## Certificate in Primary Care Radiology

### Introduction

General practitioners and family physicians who are the first point of medical contact are very important for the health of a community. However commercialization, corporatization, specialist reductionist approach to health and increasing patient awareness and medico legal litigations have made general practice difficult. Investigations are increasingly being ordered in defense against law suits apart from diagnostic purposes. Radiology and imaging given its intrinsic quality of being non invasive and informative and they are one of the most prescribed investigations.

In such a scenario General Practitioners should be abreast with the relevant knowledge in Radiology. Busy practitioners find it difficult to take time away from their busy schedules for this and here is where continuous online medical education comes in handy and makes such doctors' lives easy.

Recognizing this potential, IMACGP has designed the six months certificate course in Primary Care Radiology, which imparts adequate knowledge and skills for a busy practitioner.

The course is for those who wish to develop knowledge and skills in Radiology and Imaging and for all those who wish to manage better radiology investigations in their daily practice. The course is run for six months, using a blended approach, comprising of self-paced online education, complimented by case based discussion and graded assessments.

### Objectives of the Program

The aim of the IMACGP programs is to enhance the knowledge and practical skills of general physicians and family physicians. It prepares you as a clinician, with comprehensive and up-to-date knowledge in specific areas and allows you to confidently deal with patients.

The six months Certificate in Primary Care Radiology aims at imparting basic, simple and yet up-to-date knowledge in Radiology at primary care level. The course hones the skills on when to prescribe imaging investigations, how to interpret them and when to ask for a specialist radiologist opinion.

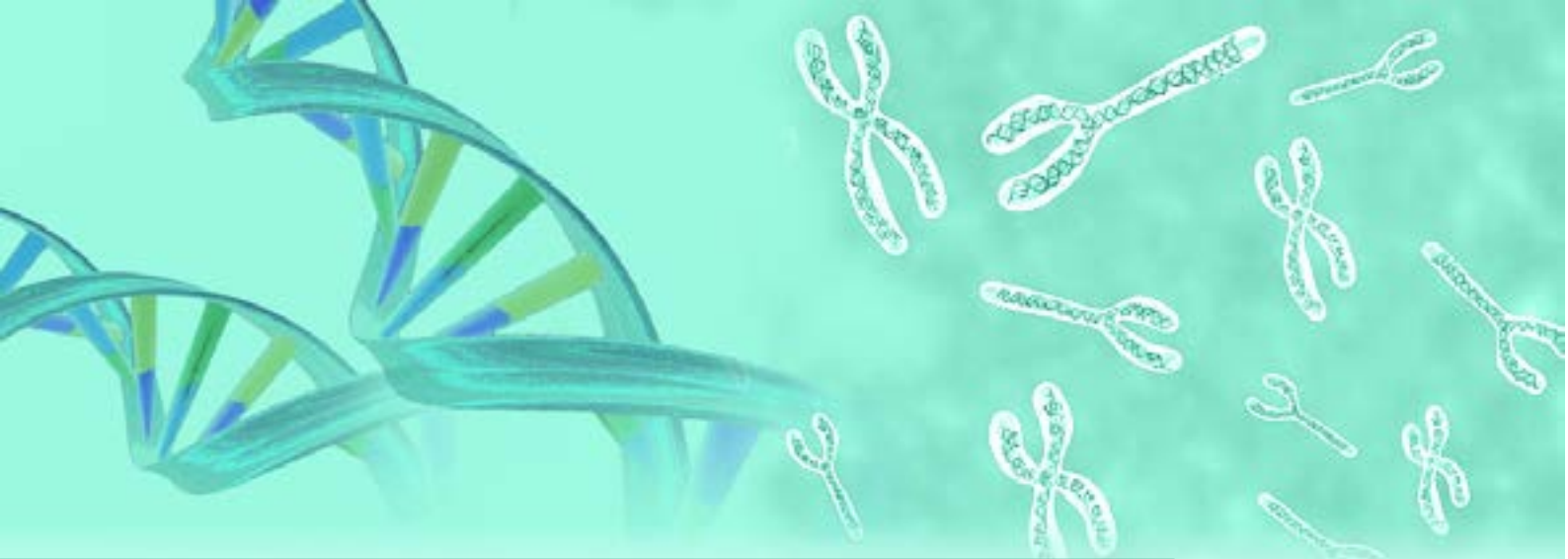
#### Program Curriculum

- Introduction to Imaging Modalities
- Image Quality Control and Optimization
- Digital Imaging and Telemedicine
- Chest and Pulmonary Imaging
- Cardiac and Mediastinal Imaging
- Musculoskeletal Patterns
- Abdominal and Urogenital Imaging
- CNS and ENT Imaging

#### Program Duration

The program duration for the Certificate in Primary Care Radiology program is six months.





## Certificate in Genetic Counselling

### Introduction

The last few decades we have witnessed an exponential growth in knowledge, catapulting genetics from obscurity to a pre-eminent place in healthcare. New information about causative genes, disease diagnosis and available treatment options for several single gene and complex genetic disorders; as well as several birth defects, are now known making disease diagnosis and treatment easier. It is critical that clinicians learn about these developments and incorporate this knowledge into their practice.

Each and every patient should be able to benefit from individualized therapy based on their unique genetic makeup; however, this can become a reality only when clinicians are able to comprehend the genetics behind the diseases and syndromes. More importantly the implications of these must be explained to the patients and relatives in a professional and compassionate manner. Such education and counseling accompanying genetic testing, is provided by Genetic Counselors in all developed countries; this kind of professional training is being taught for the first time in India for clinicians.

The National Society of Genetic Counselors (NSGC) officially defines genetic counseling as the understanding and adaptation to the medical, psychological and familial implications of genetic contributions to disease. This process integrates:

- Interpretation of family and medical histories to assess the chance of disease occurrence or recurrence.
- Education about inheritance, testing, management, prevention, resources
- Counseling to promote informed choices and adaptation to the risk or condition.

### The contemporary areas where genetic counseling is useful are:

- Congenital / birth defects - Syndromic and non-syndromic
- Mental retardation - Chromosomal and Genetic
- Male and Female Infertility, Spontaneous abortions / Bad obstetric history (BOH)
- Artificial Reproduction Techniques and Pre-implantation genetics
- Neurological disorders - Seizures, Stroke and Psychiatric disorders
- Musculo-skeletal disorders - especially Muscular dystrophies
- Metabolic disorder
- Any Familial Disorder - Eg Thalassemia
- Common adult disorders - Diabetes, Hypertension, Asthma, Cardiovascular diseases,
- Cancer genetics
- Personalized / Individualized medicine
- Stem cell banking and Regenerative Medicine
- Susceptibility to infectious diseases – TB, HPV, HIV
- Others - Deafness, Eye, Skin, Renal and Hematological disorders

## Objectives of the Program

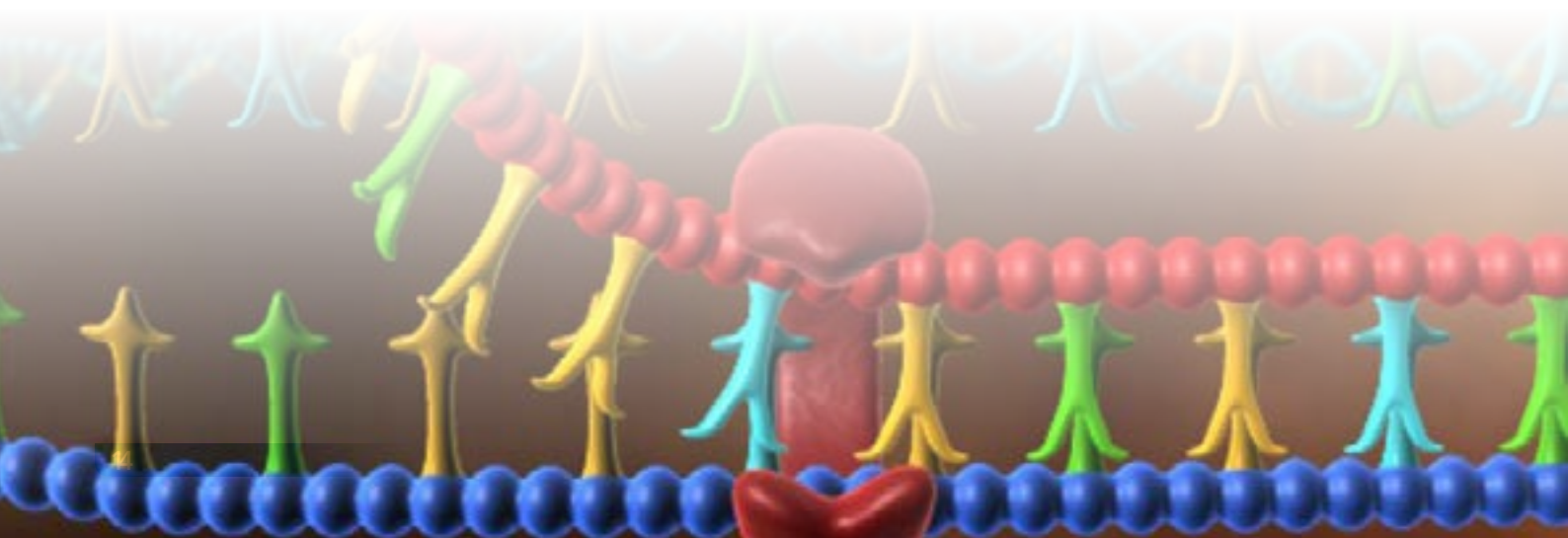
The six months Certificate course aims at imparting Clinicians with basic knowledge in Human Genetics, Genetic basis of disease, therapy and response. On completion of this course, a clinician will not only be able to provide individuals and their families' information about diseases or problems they harbor, but also advise them of appropriate genetic tests and their consequences. They will be able to indicate the potential of gene therapy, individualized medicine and enumerate the risks of occurrence of disease to other family members, both in present and future generations. They will understand the appropriate way to communicate and divulge genetic information using sound ethical and psychological methods.

Program Curriculum	
<b>Cluster 1</b> <ul style="list-style-type: none"><li>- Introduction To Human Genetics</li><li>- Genetics &amp; Inheritance</li><li>- Understanding Genetics at a Molecular Level</li><li>- Psychology &amp; Medical Ethics</li></ul> <b>Cluster 2</b> <ul style="list-style-type: none"><li>- Biochemical Basis of Genetics</li><li>- Microbiology and Genetics</li><li>- Physiology &amp; Genetics</li><li>- Contact Program 1 (Diagnostic tests/techniques)</li></ul>	<b>Cluster 3</b> <ul style="list-style-type: none"><li>- Understanding Applications of Genetics</li><li>- Genetics &amp; Hematology</li><li>- Cancer Genetics</li></ul> <b>Cluster 4</b> <ul style="list-style-type: none"><li>- Cyto-genetic Tests</li><li>- Advanced Molecular Techniques</li><li>- Clinical Genetics</li><li>- Mock Counseling Sessions</li><li>- Contact Program 2 (Clinical cases)</li></ul>
Program Duration	
The duration for the Certificate in Genetic Counseling program is six months.	

## Examination Pattern

The Certificate in Genetic Counseling is worth 500 marks and the break-up is as follows:

- Each Cluster is made up of 100 marks (i.e. 4 clusters x 100 = 400 marks)
  - Block 1 and 2 of each Cluster is for 30 marks
  - Block 3 of each Cluster is for 40 marks
- Both the Contact Programs and the Mock Counseling Session comprise of 100 marks in total





## Admission Procedure

### Eligibility

- The courses are open to MBBS Doctors who are registered with the Medical Council of India (the State chapters of Medical Council of India) and are Life members of Indian Medical Association
- For those candidates who are not members of the IMA, they should become Life members of IMA at their local chapters and send the membership details.
- A student who has been provisionally registered with Medical Council is also eligible to enroll for any of the courses, subject to his completion of Compulsory Rotatory Internship [CRI]. student should submit a Photostat copy of the Provisional Registration Certificate and a copy of the Compulsory Internship. As and when student gets the permanent registration number, student should submit the Photostat copy of the Permanent Registration Certificate.



Figure 1: Provisional Registration Certificate



Figure 2: Internship Certificate with the Number

- The student should submit a scanned copy of Internship Certificate with the Number rounded off in red as shown in the Figure 2 [Sample: E13/O.G.H./20 ..... / .....]
- Foreign medical graduates, i.e., from Russia, China, etc., would also be allowed to take up the courses but only after they register themselves with the MCI

## Fee for Courses

Please contact [info@imacgponline.com](mailto:info@imacgponline.com) or call Tollfree 18002002929

## Method of Payment

The fee can be paid by any of the following ways:

- (i) Account payee Cheque favouring IMACGP Online with your name, account number and your mobile number on the back of the Cheque.
- (ii) With your Credit/ Debit card.
- (iii) Demand Draft favouring IMACGP Online payable at Chennai.

## Refund Policy

CGP Online norms do not allow any refund once the student is enrolled. Once enrolled, the student cannot switch from one course to another or from one batch to the other. Fees once paid cannot be transferred to another candidate even if that other candidate is his own family member. For further details, please refer to the FAQs section on the Website.

## Default in paying Installments

If any student defaults in paying installment at any point of time, following measures will be enforced by the IMACGP immediately:

- The Academic wing of the IMACGP will stop the weekly-releases immediately.
- Such a student will not be allowed for any further clinical postings – a communication to that effect will go to the hospital Head.
- The student will not be given access to the Online MCQs as part of the (i) week-end graded assessments [WGA] (ii) semester-end graded assessments [SGA] (iii) mid-course graded assessments [MGA] and (iv) Final course-end graded assessments [FGA], depending on the installment which is defaulted.
- The student cannot appear for practical examination and convocation.

If the student fails to pay the installment that is due even by the end of the grace period, it shall be deemed as 'The student discontinued or dropped out'. The student shall not be allowed any further extensions in time and neither would student be entitled to claim the fees already paid.

- The Academic wing will start releasing the weekly releases only when it gets a clearance from the Finance Department.
- No questions will be entertained in this regard either through call to the IMACGP Online Call Centre or through Email

## Enrolling in a Course

Please visit the Website: [www.imacgponline.com](http://www.imacgponline.com)

### Steps to fill-in the Application Form

- Click on the Application Form link and fill-in all the details
- Take a print-out of your completed application form, sign it and send it with following attachments:
  - Passport size colour photograph pasted on the Application Form.
  - Course Fee in the form of Cheque or DD
  - Photocopy of MBBS Degree Certificate
  - Photocopy of Medical Registration Certificate [Permanent Registration Certificate ]
  - Photocopy of the IMA Membership Card [Life Membership]

If the student has not yet got his permanent medical registration with the MCI, student has to attach the following certificates in addition:

- Photocopy of Compulsory Internship Certificate [CRI] with the Number
- Photocopy of Provisional Registration Certificate



## **Application with attachments should be sent to the following address**

### **IMACGP Online**

Ground Floor, Lalita Towers, Asif Avenue,  
6-3-1089/A/B, Raj Bhavan Road,  
Hyderabad, Andhra Pradesh 500082

## **Enrollment Process**

- The Admission cell of the IMACGP will acknowledge the receipt of Application Form through Email with one of the following comments:
  - Student Enrollment Form (SEF) accepted and student enrollment is confirmed
  - Given information is not sufficient – please send the details in reply mail within 5 working days for us to close the enrollment process.
  - Your CAF has been rejected
- If IMACGP Online accepts your SEF and enrolls you, you will receive a Welcome Kit at your registered postal address within 15 working days. The Welcome Kit comprises of the following items:
  - Welcome letter with your Unique Password for accessing the 'SmarTeach' which would be your virtual classroom for the entire duration.
  - Laminated Student Identity Card with the student's Unique ID, name, photograph and the course name. The student ID Number will be issued by Martin Luther Christian University.

## **Program Accreditation**

The IMACGP has a vast network of affiliations both National and International for accreditation of its courses. Among them, the prominent ones are the University of Sydney (Australia), the George Washington University (USA), Colombo University (Sri Lanka) and many centres of excellence throughout the country which have great academic and clinical material.

CME course modules offered by the IMACGP Online are accredited by the Martin Luther Christian University, and are held valid as credits for re-registration of medical practitioners as per the current law of the country. They are available on the IMACGP Online website with a nominal fee.

## **Program Delivery**

The IMACGP courses have been crafted meticulously based on best practices in e-learning from across the Globe. The IMACGP offers best of the models of blended education running through online lectures, with the convenience of self-study at one's own pace, time and place, complemented by online faculty interactions and clinical exposure through hospital rotations.

IMACGP Online programs are delivered in two methods:

- Online Delivery: through MEdRC's SmarTeach Learning platform
- Offline Delivery: through MEdRC's SmarTeach for Tabs

## **MEdRC's SmarTeach Online Learning Platform**

A rich learning environment is provided through the SmarTeach Learning Platform with access to:

- Online lectures delivered by experts in respective fields. You may view the lecture any number of times using tools to conveniently play/pause, forward/rewind, skip/review and bookmark
- Included in these lectures are hundreds of text slides, illustrations and appropriate 2D and 3D animations, audios and videos to make concepts easy to understand and difficult to forget
- Reading material including Text book and e-Books for each chapter as pdf files; additional reading material would also be suggested as links.
- Facility for the student to bookmark specific segments of a running lecture and ability to add their notes for later review.
- Weekly self-assessment through Multiple Choice Questions (MCQs) from a question bank of over 1,00,000 questions across all subject areas

- Case based discussions, where you will be expected to select two specific cases from the list of clinical cases suggested in the curriculum during the period of compulsory clinical rotation under the guidance of in-house clinician and ensure completeness of the Logbook for the cases decided.
- The IMACGP shall invite reputed guest faculty to deliver Webinars on selected topics.

Lessons shall be delivered on a weekly basis and once the student completes the module for a particular week by viewing the lecture, completing the reading and the self-assessments student shall get access to the succeeding week's program.

## **MEdRC's SmarTeach for Tabs**

MEdRC is revolutionising the delivery of online education, by offering course content offline on a 7" Tablet, the first of its kind across the globe. The student will be able to access the course material offline. Thus it is self-paced and self-timed internet-free material on the Tab, accessible anywhere and everywhere!

- **SmarTeach for Tabs** enables students to access the lecture content on an 'Anytime – Anywhere' basis
- The e-Lessons are posted onto the tablet, making the learning accessible offline 24x7.
- **English Language** : Acts as a Revision Support for students who are from vernacular background (such as in Marathi, Telugu, Hindi, etc).
- **Student controls pace of learning** : Student can learn at their own pace; they can view or review any number of times until they understand the concept. It is advantageous for students from varied backgrounds, medium of instructions to comprehend complex subjects.
- **Student can learn 24x7 anywhere** – The lessons are accessible in the campus, at the bedside in the teaching hospital, in the hostel, at home and even in the bus on way to college and back home.
- **Instant Recall** : Ability to create Bookmark and jot down Quick Notes which facilitates a student to recall/revise or review before exams.
- **Please contact** Tollfree 18002002929 for information on the pricing of the Tab.

## **Clinical Training**

The IMACGP has a wide national presence and many eminent doctors and hospitals across the country, not only Government hospitals, but also corporate, private and missionary hospitals extend their unflinching support to the program delivery. Students can have the clinical training in the hospitals where they are already working. The Clinical training arranged in other hospitals may require fee to be paid to that hospital. The Certificate Course in Primary Care Radiology does not have clinical training.

## **Clinical Log Book**

The student has to maintain a Log book during his clinical training. Every student has to maintain a Clinical Log Book containing details of the work done by him/her during the entire period of training.

### ***The clinical log book will include:***

- All written work such as assignments, presentations and case scenarios
- Case vignettes and learning points
- Procedures observed/ performed
- Teaching sessions attended or presented
- Personal thoughts and reflections
- Specialist interventions observed or performed

At the time of practical examination, students will be required to produce the log book. In the absence of log book, the result will not be declared. However, a certificate to this effect has to be attached along with the application form for eligibility purposes. The supervisor would also offer his remarks on the training received by the students in the clinical log book. The student's assessment during clinical rotation certified by the authorized hospital and the log book together carry weightage of 15% in the exam grades.



## Examination Methodology

### Pattern & General rules of Assessments and Examinations<sup>2</sup>

Diploma, Fellowship and certificate courses follow a set pattern of formative and summative assessments/ examinations. Following are the types of assessments/examinations that each candidate is subjected to:

- Self Assessments
- Weekend Graded Assessments [WGA]
- Semester-end Graded Exams [SGA]: There will be a graded MCQ Examination at the end of every semester, i.e. first semester-end for the one-year courses and the first, second and the third semester-end for the two-year courses.
- Final End-course Graded Exams [FGA]

**Self assessments:** These are scheduled online at the end of every lecture and are neither timed nor graded. These assessments help the candidates in assessing themselves on how much they grasped the lecture, know where to refocus, study, understand and assimilate. They are strongly advised to be taken up but it is not a compulsion.

**Weekend assessments:** Each week of the course concludes with an online weekend assessment. Candidates will be questioned on all the topics covered in that week. There are a predetermined number of MCQs to be answered in a stipulated period of time. All the weekend assessments that precede a spell of clinical rotation have to be completed and submitted by the weekend preceding that of the clinical rotations, submission beyond which marks will not be awarded. These are graded and once submitted cannot be re-attempted for a better score. The scores will carry considerable weightage towards formative assessments of theory.

**Semester<sup>3</sup> end assessments:** These are graded online assessments scheduled at the end of every semester. Candidates will be questioned on all the topics covered in that semester. There are a predetermined number of MCQs to be answered in a stipulated period of time. Once submitted, they cannot be reattempted for a better score. The score will carry weightage towards formative assessments of theory.

Weekend and Semester-end assessments are part of formative assessment of theory and constitute 60% of final score on theory, the balance 40% being covered by the final theory examination.

**Theory course-end exam:** The final theory exam, which is the summative assessment that constitutes the balance 40% of the weightage for the theory exam. They consist of 50 MCQs and are to be completed in stipulated period of time. Once submitted, they cannot be reattempted for a better score.

If the student fails to secure 50% marks in the final theory exam, he can reattempt the same at the end of one and two months. The student has to pay the requisite examination fees.

**Pass Marks:** Candidate should score 50% separately in theory.

<sup>2</sup>The Exam pattern and rules of assessment may change and the student will be informed in advance

<sup>3</sup>Semester: 6 months

**Examination Fees:** Examination fee of Rs. 2,500/- will be collected in the beginning of the last semester, i.e. in the beginning of the second semester for the one-year courses and the fourth semester for the two-year courses.

**Examination Form:** Candidate should fill in the examination form for the examinations and submit it along with examination fees.

**Results:** The results will be announced online and the student can download the grade card from his SmarTeach account.

**Re-evaluation:** All efforts will be taken to assess the examinations in an impartial and 'unbiased' manner, despite which if the student feels and wants to appeal, he would be allowed to do so within a month of the declaration of results. No appeal or request shall be entertained thereafter. Revaluation fee will be decided before the examination starts.

### **Criteria for Award of Diploma/Fellowship**

A candidate should satisfy the following criteria for the successful completion of the course:

- 50 % marks in the theory examinations
- 50 % mark in the assignments.
- 50 % mark in Log Books.

**Martin Luther Christian University** will award the Diploma or Fellowship or Certificate to the student after successful completion of the Program.





## DISCLAIMER

The information provided in this Prospectus is only for the immediate use of the candidates and does not constitute a legal document. While all efforts have been made to make the information available here as authentic as possible, The IMACGP Online is not responsible for any inadvertent error or inaccuracy that may have crept in.

The information provided by you is processed and the decision of the IMACGP Online stands final. Any information withheld or wrongly reported by you may result in cancellation of your admission without notice.

The information in the prospectus relates primarily to the session 2014-2015 and every effort has been made to ensure it is correct at the time of the publication. The IMACGP Online will use its reasonable efforts to deliver the programs as described. The prospectus is prepared in advance of the academic year to which it relates. Although reasonable steps are taken by the IMACGP to provide the courses and services described, the IMACGP Online cannot guarantee the provision of any course or facility.

The IMACGP Online reserves the right for any reason without notice to withdraw or change any of the programs included in this prospectus, to alter tuition or exam fees, entry requirements, course content and syllabus, admission and examination policies, the facilities and/or services available from or provided by or on behalf of the IMACGP Online.

The IMACGP Online reserves the right to make changes to its statutes, ordinances, regulations, policies and procedures which the IMACGP Online reasonably considers necessary (for example, in the light of changes in the law or the requirements of the IMACGP Online's regulators); to discontinue programs of study or to combine or merge them with others.

The IMACGP Online strives to keep information stored on its servers up to date, but does not guarantee the accuracy, reliability or currency of the information. Any errors in the information that are brought to our attention will be corrected as soon as possible. The IMACGP Online reserves the right to change at any time without notice any information stored on the server. This includes information about courses or units of study offered by the IMACGP Online. IMACGP Online accepts no responsibility or liability for the content available at the sites linked from this Website.

If you accept a place on a program, the relationship between you and the IMACGP Online will be governed by the rules and regulations for students, which include the Student Agreement. The student has to follow the rules and regulations formulated by the IMACGP Online and he or she is responsible for any consequences in case they fail to comply with the rules.

While the IMACGP Online takes every care to send the material wherever required by courier, it shall not be responsible for the non-delivery or delayed delivery of the same either for the courier/postal lapse or because of change in the contact address of the student or for any other reason.

Prospective candidates should note that, in the event of any circumstance occurring, the IMACGP Online cannot accept liability for any complaints or claims for costs, losses or damages made by a student resulting from a service disruption or closure, or any change to, or withdrawal of, a programme/module that he/she had intended to study, or the addition of a new programme.



**MEdRC**

The Heart of Learning



Martin Luther Christian University



**IMACGP**  
**ONLINE**

## **IMACGP Online**

Ground Floor, Lalita Towers, Asif Avenue, 6-3-1089/A/B,  
Raj Bhavan Road, Hyderabad, Andhra Pradesh 500082

**18002002929 | [info@imacgponline.com](mailto:info@imacgponline.com) | [www.imacgponline.com](http://www.imacgponline.com)**